



PRODUCT SPECIFICATION

CAT6-CMP

Description: 23AWG CCA Plenum, unshielded four twisted pairs, Category 6 Cable.
Extended testing to 550 MHz

Ratings/Approvals: CMP Rating, Category 6

Applications: Supports all Gigabit Ethernet/1000BASE-T/IEEE 802.3ab, ATM up to 155 Mbps, 100 Mbps Fast Ethernet 100BASE-T/IEEE 802.3, ANSI.X3.263 FDDI TP-PMD, Ethernet 10BASE-T/IEEE 802.3, 4 & 16 Mbps Token Ring/IEEE 802.5, T1/E1, xDSL, ISDN, 550 MHz Broadband Video and standards under development such as ATM at 622 Mbps, 1.2, 2.4 and 4.8 Gbps

CONSTRUCTION

Conductor:	23 AWG
Insulation Material:	Hdpe
Number of Conductors or Pairs:	4 Pair
Jacket Material:	Flame Retardant Polyvinyl Chloride
Nominal Overall Cable Diameter:	0.240 in.
Approximate Cable Weight:	23 lbs/1,000 ft.
Marking:	CAT6 550MHz CMP PLENUM UTP 4-PAIR 23AWG EIA/TIA-568-C.2-1 0002FT-1000FT

ELECTRICAL & PHYSICAL PROPERTIES

Temperature Rating:	Installation: 0°C to 50°C Operation: -2°C to 60°C
Velocity of Propagation:	72%
Mutual Capacitance:	14 pF/ft Nominal
Capacitance Unbalance:	330 pF/ft maximum
Maximum Conductor D.C.R.:	86 Ω/1,000 ft
Maximum D.C.R. Unbalance:	3%
Maximum Delay Skew:	18 ns/100m
Characteristic Impedance:	From 0.772 MHz - 100 MHz 100 ± 15% From 100 MHz - 250 MHz 100 ± 22% From 251 MHz - 550 MHz 100 ± 32%
Minimum bend radius:	1.0 in.
Insulation Colors:	Blue paired with White/Blue Orange paired with White/Orange Green paired with White/Green Brown paired with White/Brown



PHONE: (301) 937-5500

sales@bncables.com

11399 Frederick Avenue,
Suite A,
Beltsville, MD 20705, USA

The information provided here in is, to the best of our knowledge, true and accurate. Since conditions of use are beyond our control, all information presented is without guarantee or responsibility on our part. We disclaim all liability in connection with the use of information contained herein or otherwise.



Cable ID: 361-1 UTP4 CAT6 35% 0.57BN

Test Limit: TIA Cat 6 Perm. Link

Limits Version: V7.6

Date / Time: 09/11/2021 11:40:32 PM

Operator: LIXIAOHONG

Headroom 1.9 dB (NEXT 1,2-3,6)

Cable Type: Cat 6 U/UTP

NVP: 69.0%

Main: Versiv

S/N: 2034142

Software Version: V6.6 Build 2

Calibration Date: 12/23/2020

Adapter: DSX-8000 (DSX-PLA804)

S/N: 20475125

Test Summary: PASS

Remote: Versiv

S/N: 2035009

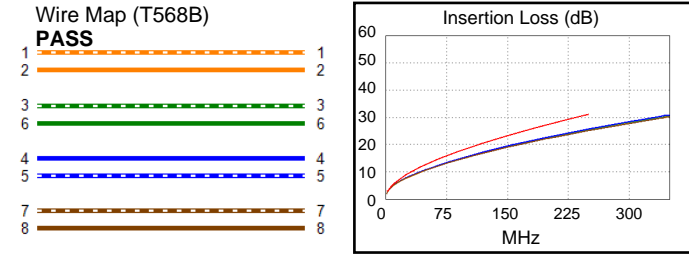
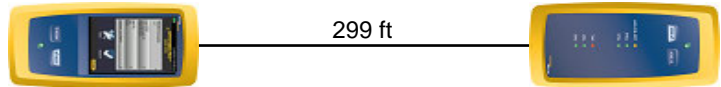
Software Version: V6.6 Build 2

Calibration Date: 12/23/2020

Adapter: DSX-8000R (DSX-PLA804)

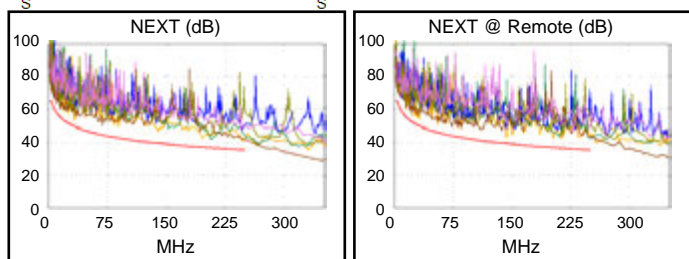
S/N: 20485133

Length (ft), Limit 295	[Pair 7,8]	281
Prop. Delay (ns), Limit 498	[Pair 4,5]	430
Delay Skew (ns), Limit 44	[Pair 4,5]	15
Resistance (ohms)	[Pair 7,8]	20.39
Insertion Loss Margin (dB)	[Pair 4,5]	5.4
Frequency (MHz)	[Pair 4,5]	250.0
Limit (dB)	[Pair 4,5]	31.1

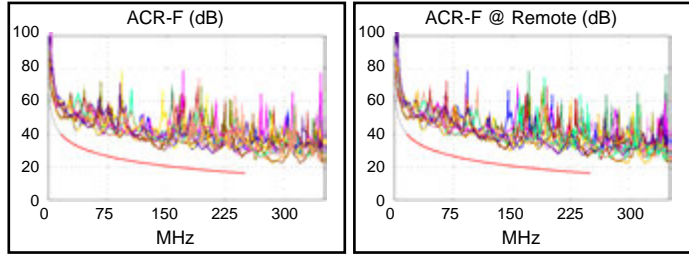


Worst Case Margin Worst Case Value

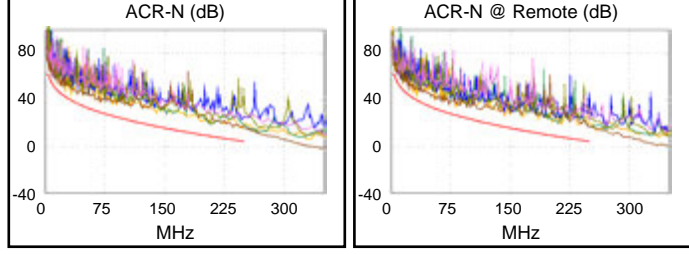
PASS	MAIN	SR	MAIN	SR
Worst Pair	1,2-3,6	1,2-3,6	3,6-4,5	1,2-3,6
NEXT (dB)	3.9	1.9	5.4	5.9
Freq. (MHz)	32.3	32.0	250.0	214.5
Limit (dB)	49.8	49.8	35.3	36.4
Worst Pair	3,6	3,6	3,6	4,5
PS NEXT (dB)	5.0	3.0	5.5	6.4
Freq. (MHz)	32.3	32.3	246.0	249.5
Limit (dB)	47.3	47.3	32.8	32.7



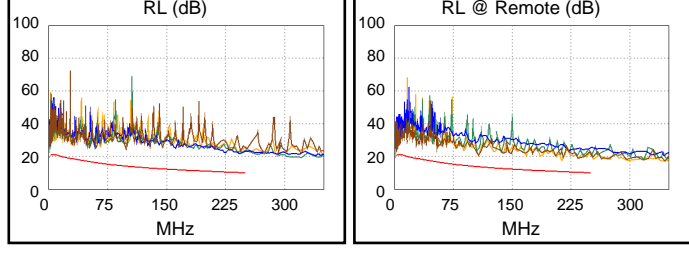
PASS	MAIN	SR	MAIN	SR
Worst Pair	1,2-3,6	3,6-1,2	4,5-3,6	3,6-4,5
ACR-F (dB)	8.4	8.5	9.6	9.4
Freq. (MHz)	15.0	15.1	246.0	246.0
Limit (dB)	40.7	40.6	16.4	16.4
Worst Pair	4,5	3,6	3,6	3,6
PS ACR-F (dB)	10.3	9.7	11.5	10.2
Freq. (MHz)	142.0	144.5	246.0	245.0
Limit (dB)	18.1	18.0	13.4	13.4



N/A	MAIN	SR	MAIN	SR
Worst Pair	1,2-3,6	1,2-3,6	3,6-4,5	1,2-4,5
ACR-N (dB)	5.5	3.4	10.8	12.4
Freq. (MHz)	32.3	32.0	250.0	249.0
Limit (dB)	39.6	39.7	4.2	4.3
Worst Pair	3,6	3,6	4,5	4,5
PS ACR-N (dB)	6.0	4.5	11.3	11.7
Freq. (MHz)	18.8	32.3	250.0	249.5
Limit (dB)	43.5	37.2	1.6	1.7



PASS	MAIN	SR	MAIN	SR
Worst Pair	7,8	1,2	4,5	1,2
RL (dB)	8.1	6.6	11.2	6.7
Freq. (MHz)	53.8	4.0	244.5	213.5
Limit (dB)	16.7	21.0	10.1	10.7



Compliant Network Standards:
 10BASE-T 100BASE-TX 100BASE-T4
 1000BASE-T 2.5GBASE-T 5GBASE-T
 ATM-25 ATM-51 ATM-155
 100VG-AnyLan TR-4 TR-16 Active
 TR-16 Passive